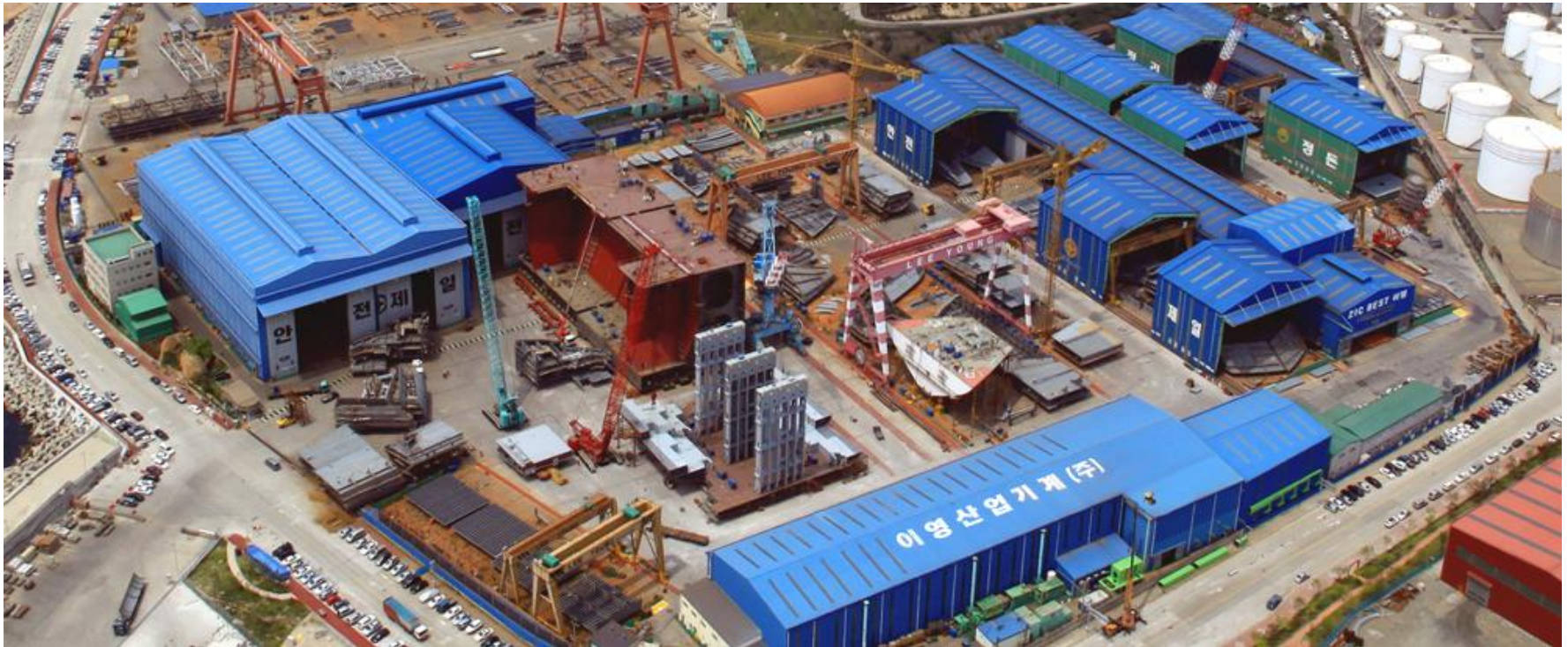




LEE YOUNG
INDUSTRIAL MACHINERY Co., Ltd.

*Leader of hull structure
manufacturing*



LEE YOUNG INDUSTRIAL MACHINERY Co., Ltd.

LEEYOUNG

목 차

I. 회사 일반

II. 생산제품

III. 주요 시설 및 설비



I. 회사 일반

- 1) 회사 개요
- 2) 공장 현황
- 3) 수상 내역
- 4) 조직도
- 5) Policy
- 6) 인증 현황
- 7) 주요 고객

I. 회사 일반/ 1) 회사 개요

LEE YOUNG

- 설립일 : 1994年. 7月.(創立 25年)
- 대표이사 : 이 정 호
- 본사 : 울산광역시 울주군 온산읍
산암로 364
- 종업원 수 : 650 명
- 주요제품 : 선박부분 구성품, 해양,
압력용기, Plant, 철구조물



I. 회사 일반/ 2) 공장 현황



군산 (대륜중공업)



생산능력 & 면적: 6,000ton/월, 36,147평
 생산품목 : 곡블럭, 직BLT

경주 (아주 산업)



생산능력 & 면적 : 2,300ton/월, 3,562평
 생산품목 : 곡BLT, Chain locker
 절단, 성형작업

울산 (이영산업기계)



이진공장 본사, 33,830평
 생산능력: 7,400ton/월
 생산품목 : 곡블럭, MEGA 블럭, TANK



대정공장, 11,234평
 생산능력: 1,000ton/월
 생산품목 : L/Bridge



당월공장, 14,523평
 생산능력 : 2,400ton/월
 생산품목 : 곡블럭

I. 회사 일반/ 3) 수상 내역



/2009.09

/2010.03

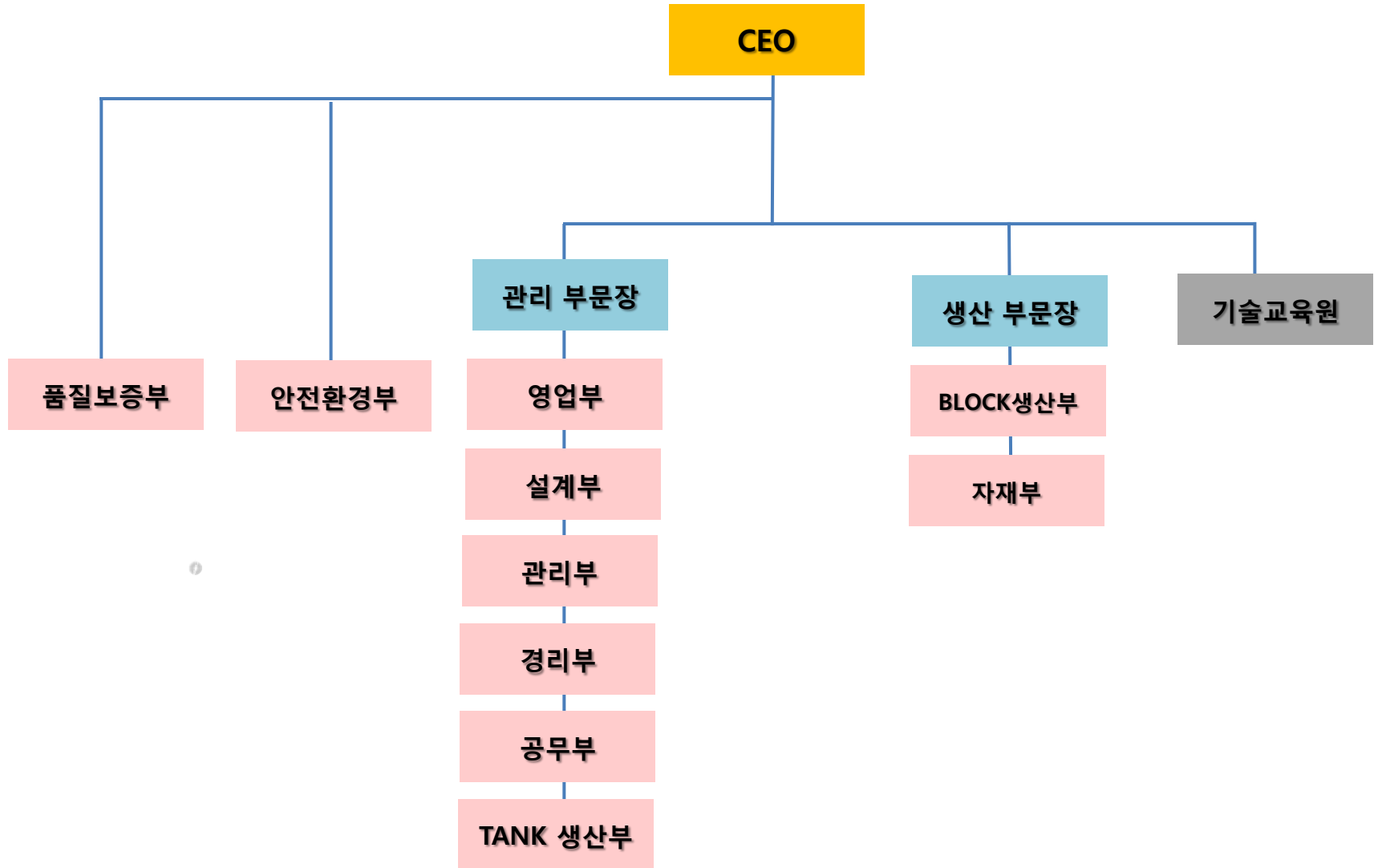
/2012.09

9월.
제33회 국가생산성
대회 종합 대상
“대통령 표창”

3월.
제 22회 울산상공
대상 “경영 대상”
수상

9월.
제36회 국가생산성
대회 “은탑산업훈장”
수훈

I. 회사 일반/ 4) 조직도



I. 회사 일반/ 5) Policy

HSE POLICY

LEEYOUNG INDUSTRIAL MACHINERY Co., LTD recognized problems related HSE as days go by, It gets all of members work in pleasant workplace to prevent injuries and diseases that based on the dignity of man.

And HSE is decided the first priority at all of business activities, All members under the management of organization keep going to pursue continuous improvement activities.

And swear as follows,

“The lives of workers do not perform as collateral”

QUALITY POLICY

LEEYOUNG INDUSTRIAL MACHINERY Co., LTD observe the product manual that is based on ISO 9001's specification and improve quality of products continuously.

The company realizes customer's satisfaction and management goal by supplying products that satisfies the customer's needs, that is made by more economical method.

All the staffs and works must understand quality policy, run and keep.

Quality Goal : Zero out customer's dissatisfaction.

I. 회사 일반/ 6) 인증 현황

● 공장승인

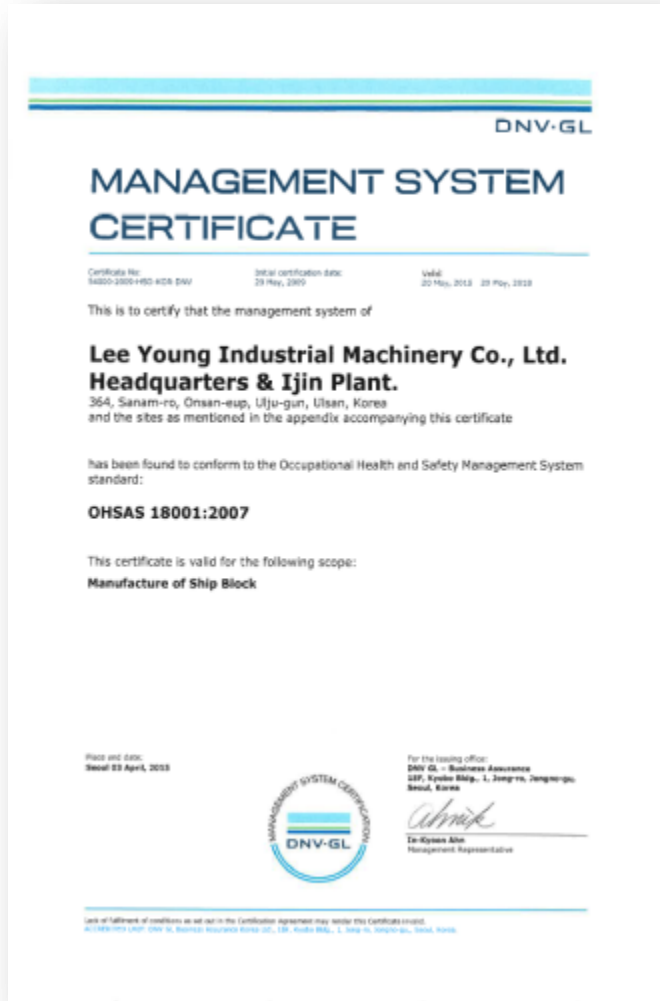


● ISO 9001:2015



I. 회사 일반/ 6) 인증 현황

● 안전 보건 경영 시스템



◆ OHSAS 18001

I. 회사 일반/ 7) 주요 고객

현대중공업 그룹이 당사의 주요 고객으로, 당사 점유율이 90%인 핵심고객입니다. 그 외 STX, 한진 중공업과도 거래 관계를 지속하고 있습니다.





II. 생산 제품

- 1) 조선 Block
- 2) Tank
- 3) 기타 제품

Ⅱ. 생산 제품 / 1) 조선 Block

● 선수 곡BLOCK



FORE CASTLE BLOCK

● 선미 곡BLOCK



RUDDER HORN BLOCK



BULBOUS BOW BLOCK



PROPELLER BOSS BLOCK

Ⅱ. 생산 제품 / 1) 조선 Block

● 조선 부분품



STOOL BLOCK



UPPER DECK MODULE UNIT



LASHING BRIDGE



RUDDER

Ⅱ. 생산 제품 / 1) 조선 Block

● Mega BLOCK



MEGA BLOCK (FWD)



MEGA BLOCK (MID)

Ⅱ. 생산 제품 / 1) 조선 Block

● Mega Block 생산 실적

No	Ship Type	Ship Part	Weight (Ton)	Product Year	Customer
1	13,100TEU Container Carrier	MID	3,644	2010	STX
2	181K Bulk Carrier	MID	3,582	2011	STX
3	181K Bulk Carrier	FORE	3,852	2011	STX
4	13,100TEU Container Carrier	MID	3,644	2011	STX
5	13,100TEU Container Carrier	MID	2,014	2011	STX
6	13,100TEU Container Carrier	MID	3,644	2011	STX
7	298K Very Large Ore Carrier	MID	3,547	2012	STX
8	181K Bulk Carrier	FORE	4,139	2012	STX
9	181K Bulk Carrier	FORE	4,167	2012	STX
10	400K Very Large Ore Carrier	MID	4,745	2012	STX
11	155K Shuttle Tanker	FORE	2,357	2012	STX
12	155K Shuttle Tanker	MID	1,842	2012	STX
13	181K Bulk Carrier	MID	2,991	2012	STX
14	400K Very Large Ore Carrier	MID	1,971	2012	STX
15	400K Very Large Ore Carrier	MID	2,154	2013	STX
16	58K Bulk Carrier	MID	1,202	2013	STX
17	51K Product Carrier	MID	1,351	2013	STX

Ⅱ. 생산 제품 / 2) TANK

● Cargo Tank



Semi – Pressurized Type 22K LPG Gas Carrier Tank



Fully – Pressurized Type 5K LPG Gas Carrier Tank



Semi – Pressurized Type 6.5K LPG Gas Carrier Tank.



Semi – Pressurized Type 9K LPG Gas Carrier Tank.

Ⅱ. 생산 제품 / 2) TANK

● Ethylene Cargo Tank



- 제원: 1) Cargo Tank: L 36.7m× W 13.4m× H 16.5m : 2 set/척
2) Deck Tank: L 12.4m× W 3.2m× H 3.2m : 1 set/척
- 재질: 5% Nickel강
- 용량: 9,000 cbm/척당

Ⅱ. 생산 제품 / 2) TANK

● Fuel Tank

● Sub-Assembly



Ⅱ. 생산 제품 / 2) TANK

● Fuel Tank

● Assembly



● Unit Assembly



Ⅱ. 생산 제품 / 2) TANK

● Fuel Tank

● Insulation (PU Spray)



● Tank equipment unit



● Delivery



Ⅱ. 생산 제품 / 2) TANK

● Fuel Tank



LNG Fuel Storage Tank 출하식



LNG Fuel Storage Tank 탑재대기



LNG Fueled 114K Crude Oil Tanker <탑재후>

- 선주 :SOVCOMFLOT
- CLASS : DNV-GL
- 제원: L 24.3m× × H 7m
- 재질: 9% Nickel강
- 용량: 850 cbm (TANK당)
- 제작 SCOPE
 - 기본도 : HHI
 - 의장도 : HSHI
 - 선체생산설계 : 이영
 - MSR : HHI
 - 자재공급 : HSHI 사급

Ⅱ. 생산 제품 / 2) TANK

● Fuel Tank



- 선주 : H-LINE
- CLASS : DNV-GL, KR
- 제원: L 26m × × H 9.45m
- 재질: 9% Nickel강
- 용량: 1600 cbm (TANK당)
- 제작 SCOPE
 - 기본도 : HHI
 - 의장도 : HSHI
 - 선체생산설계 : 이영
 - MSR : HHI
 - 자재공급 : HSHI 사급

Ⅱ. 생산 제품 / 2) TANK

● Storage Tank



Conical Type 4.7K Platform Supply Vessel SUS Tank.



Platform Supply Vessel

II. 생산 제품 / 2) TANK

NO	Project	Ship Type	WEIGHT (TON)	TANK TYPE	STEEL TYPE	Owner	Class	Clint	Delivery	Remark
1	B5017	9,000 cbm Ethylene carrier	825	Cylindrical	5% NI	SCHULTE	DNV	stx	2007. 3	
2	B5019	9,000 cbm Ethylene carrier	825	Cylindrical	5% NI	SCHULTE	DNV	stx	2007. 9	
3	B5020	9,000 cbm Ethylene carrier	825	Cylindrical	5% NI	SCHULTE	DNV	stx	2007. 10	
4	B5021	9,000 cbm Ethylene carrier	825	Cylindrical	5% NI	BENELUX	DNV	stx	2007. 12	
5	B5022	9,000 cbm Ethylene carrier	825	Cylindrical	5% NI	BENELUX	DNV	stx	2008. 1	
6	B5023	9,000 cbm Ethylene carrier	825	Cylindrical	5% NI	VENUS	DNV	stx	2008. 2	
7	B5025	9,000 cbm Ethylene carrier	825	Cylindrical	5% NI	VENUS	DNV	stx	2008. 4	
8	B5026	9,000 cbm Ethylene carrier	825	Cylindrical	5% NI	BENELUX	DNV	stx	2008. 6	
9	B5040	9,000 cbm Ethylene carrier	825	Cylindrical	5% NI	BENELUX	GL	stx	2009. 12	
10	B5041	6,500 cbm LPG carrier	620	Cylindrical	NV4-4L	ESHIPS	DNV	stx	2010. 2	
11	B5042	9,000 cbm Ethylene carrier	825	Cylindrical	5% NI	BENELUX	GL	stx	2010. 3	
12	B5043	6,500 cbm LPG carrier	620	Cylindrical	NV4-4L	ESHIPS	DNV	stx	2010. 4	
13	B5044	9,000 cbm LPG carrier	850	Cylindrical	NV4-4L	BENELUX	GL	stx	2011. 9	
14	B5046	9,000 cbm LPG carrier	850	Cylindrical	NV4-4L	BENELUX	GL	stx	2012. 1	

CARGO TYPE	Ethy 12 Vessel, LPG 10 Vessel , PSV STROAGE 2 Vessel, FUEL TANK 15 Vessel
TANK TYPE	Cylinder TYPE 34 Vessel, Bi-Lobe 3 Vessel, Conical Type 2 Vessel.

II. 생산 제품 / 2) TANK

NO	Project	Ship Type	WEIGHT (TON)	TANK TYPE	STEEL TYPE	Owner	Class	Clint	Delivery	Remark
15	B5048	9,000 cbm Ethylene carrier	850	Cylindrical	5% NI	BENELUX	GL	stx	2013. 6	
16	B5060	9,000 cbm Ethylene carrier	850	Cylindrical	5% NI	ADNOC	DNV	stx	2013. 9	
17	8101	4,700 cbm Platform Supply Vessel	268	Conical	SUS 316L	BP	DNV	HMD	2013. 5	
18	8102	4,700 cbm Platform Supply Vessel	268	Conical	SUS 316L	BP	DNV	HMD	2013. 6	
19	B5065	5,000 cbm LPG carrier	840	Cylindrical	S690QL, S420M	BMC	BV	stx	2015. 1	
20	B5066	5,000 cbm LPG carrier	840	Cylindrical	S690QL, S420M	BMC	BV	stx	2015.3	
21	S4053	22,000 cbm LPG carrier	3,130	Bi-Lobe	LT-FH36	ULTRAGAS	LR	stx	2015.11	
22	S4054	22,000 cbm LPG carrier	3,130	Bi-Lobe	LT-FH36	ULTRAGAS	LR	stx	2015.12	
23	S4055	22,000 cbm LPG carrier	3,130	Bi-Lobe	LT-FH36	ULTRAGAS	LR	stx	2016.2	
24	S919	114K COT, LNG FUEL TANK	200	Cylindrical	9% NI	SOVCOMFLOT	DNV,GL,RS	HSHI	2018. 4	
25	S920	114K COT, LNG FUEL TANK	200	Cylindrical	9% NI	SOVCOMFLOT	DNV,GL,RS	HSHI	2018. 6	
26	S921	114K COT, LNG FUEL TANK	200	Cylindrical	9% NI	SOVCOMFLOT	DNV,GL,RS	HSHI	2018. 8	
27	S922	114K COT, LNG FUEL TANK	200	Cylindrical	9% NI	SOVCOMFLOT	DNV,GL,RS	HSHI	2018.10	
28	S923	114K COT, LNG FUEL TANK	200	Cylindrical	9% NI	SOVCOMFLOT	DNV,GL,RS	HSHI	2018. 11	
29	S924	114K COT, LNG FUEL TANK	200	Cylindrical	9% NI	SOVCOMFLOT	DNV,GL,RS	HSHI	2018. 12	
30	9001	114K COT, LNG FUEL TANK	200	Cylindrical	9% NI	ROSNEFT	RS	HSHI	2019.2	
31	9002	114K COT, LNG FUEL TANK	200	Cylindrical	9% NI	ROSNEFT	RS	HSHI	2019.12	
32	9003	114K COT, LNG FUEL TANK	200	Cylindrical	9% NI	ROSNEFT	RS	HSHI	2020.5	
33	8034	180K BULK, LNG FUEL TANK	340	Cylindrical	9% NI	H-LINE	DNV, GL	HSHI	2020.5	
34	SB638	3,500 cbm LPG Carrier	500	Cylindrical	D690	GS CALTEX	KR	DAESUN	2020.7	
35	8035	180K BULK, LNG FUEL TANK	340	Cylindrical	9% NI	H-LINE	KR	HSHI	2020.8	
36	2741	25K PC, LNG FUEL TANK	198	Cylindrical	9% NI	SOLARII	LR	HMD	2020.10	
37	2743	25K PC, LNG FUEL TANK	198	Cylindrical	9% NI	SOLARII	LR	HMD	2021.1	
38	8037	180K BULK, LNG FUEL TANK	340	Cylindrical	9% NI	H-LINE	KR	HSHI	2021.5	
39	8038	180K BULK, LNG FUEL TANK	340	Cylindrical	9% NI	H-LINE	KR	HSHI	2021.8	

Ⅱ. 생산 제품 / 3) 기타 제품



철구조물.



강교



화차



풍력 발전 부분품



Ⅲ. 주요 시설

Ⅲ. 주요시설

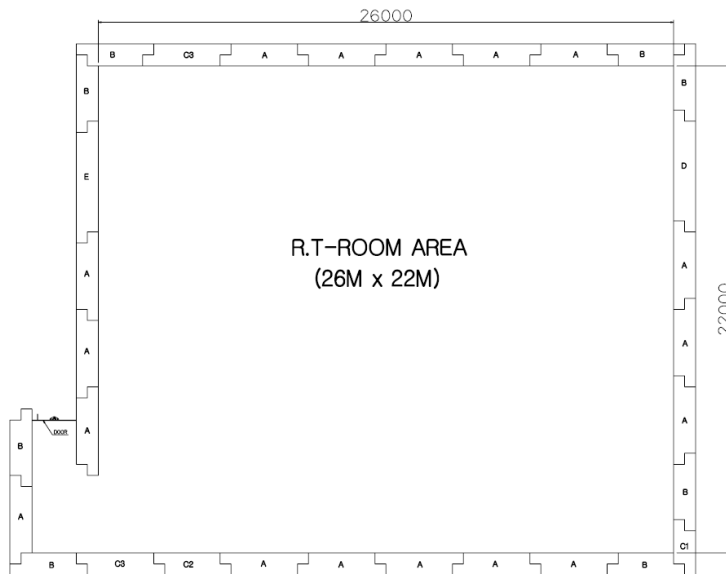
● 안벽현황



길이	242m	
형태	BP-펜더 직접부두	
최대 하역 능력	50,000톤	
접안 가능BARGE	수심	15M
	최대	30,000P (21,000dwt)
	최소	3,000P (2,000dwt)
안벽높이	17.5m	
최고만조	15.3m	
최저간조	14.7m	

Ⅲ. 주요시설

● 방사선 투과 검사 전용 Room



- INSIDE SIZE : 26M X 22M X 6M

Ⅲ. 주요시설

● Tank 조립 Shop.



조립 Shop

보온 Shop

(unit : m)

Shop Name	Size			Remark
	W	L	H	
조립 Shop "A"	30.5	90	27	
조립 Shop "B"	25.5	90	27	
보온 Shop	43	45	27	

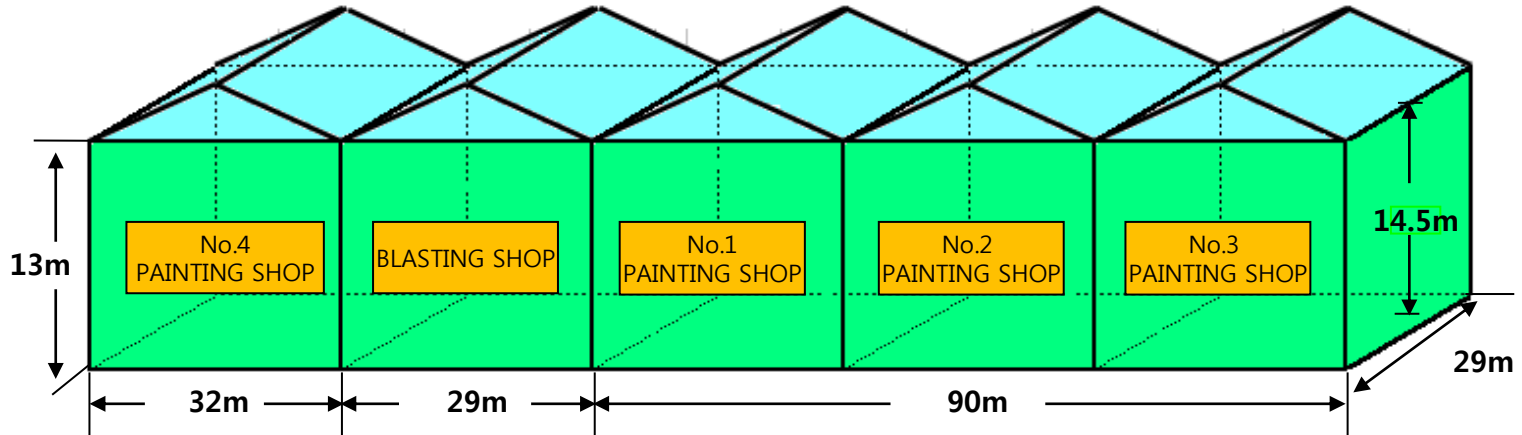
Ⅲ. 주요시설

● 용접 기술 연구소



Ⅲ. 주요시설

● 도장 설비



(unit : m)

Shop Name	Size			Remark
	W	L	H	
Blasting Shop	29	29	14.5	
No.1 Painting Shop	29	29	14.5	
No.2 Painting Shop	29	29	14.5	
No.3 Painting Shop	32	29	14.5	
No.4 Painting Shop	32	26	13	

Ⅲ. 주요시설

< 기술교육원 >



WELDING ROOM(30EA 부스)